

Your Vision, Our Future



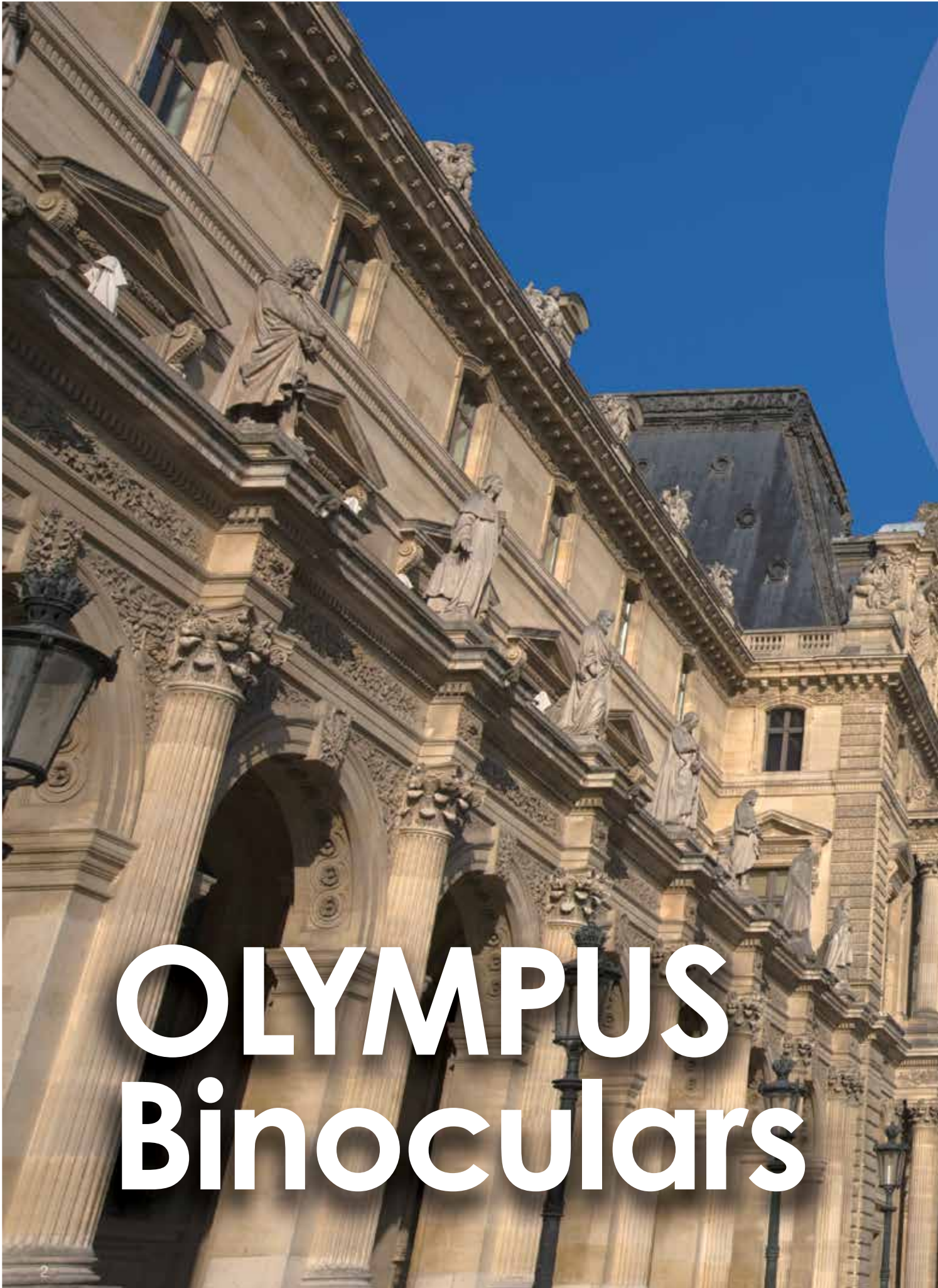
PROFESSIONAL | NATURE



LEISURE | SPORTS



LEISURE | NATURE



OLYMPUS Binoculars

See the world in awe-inspiring detail with Olympus binoculars

The Olympus range of high performance binoculars are designed and manufactured using the same cutting edge optical research and manufacturing technologies employed in its renowned photographic, scientific and medical optics. High optical performance, excellent ergonomics and lasting quality are the hallmarks of Olympus binoculars.





PROFESSIONAL | EXTREME



LEISURE | NATURE

EXWP I SERIES

FOR WATER AND EXTREME ENTHUSIASTS

DPS I SERIES

FOR NATURE ENTHUSIASTS



8x42 EXWP I

Waterproof binoculars can be submerged to a depth of 1 metre for up to 5 minutes



10x50 DPS I

30% wider view

- Nitrogen-filled body for waterproof / fogproof / dirtproof performance
- Perfect view in low light conditions
- Fully multi-coated lenses for maximum image brightness and contrast
- High index BaK-4 prisms for bright, crisp, edge-to-edge images

- Wide-angle field of view for fast moving subjects
- Rugged, high-quality finish with sure-grip rubber coating
- Perfect view in low light conditions



10x42 EXWP I



8x40 DPS I

7x35 DPS I





LEISURE | SPORTS



LEISURE | NATURE

DPC I SERIES

FOR SPORTS AND ADVENTURE TOURS

ZOOM DPS I SERIES

FOR NATURE ENTHUSIASTS



8x21 DPC I

Silver



8-16x40 ZOOM DPS I

- All-round binoculars for easy handling in all situations
- Feather light and compact for easy transportation

- 8-16x powerful zooming capability
- Rugged, high-quality finish with sure-grip rubber coating
- UV protection



8x21 DPC I

Silver
Steel Blue

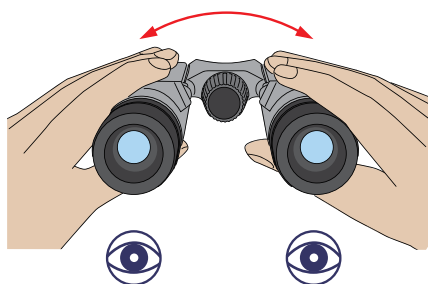


Up to 16x zoom

Model	8x21 DPC I	8-16x40 ZOOM DPS I	7x35 DPS I	8x40 DPS I	10x50 DPS I	8x42 EXWP I	10x42 EXWP I
Types Of Prism	Porro	Porro	Porro	Porro	Porro	Roof	Roof
Magnification	8	8-16	7	8	10	8	10
Objective Lence Diameter(mm)	21	40	35	40	50	42	42
Exit Pupil(mm)	2.6	5-2.5	5	5	5	5.3	4.2
Actual Field of View	6.4	5.0-3.4	9.3	8.2	6.5	6.3	6.0
Apparent Angle of view	51.2	40.0-54.4	65.6	65.6	65.0	50.4	60.0
Field view at 1000 m (m)	112	87-59	143	143	114	110	105
Brightness	6.9	25-6.3	25	25	25	28	18
Eye Relief	11	10-12	12	12	12	18	15
Near Focus Distance	2.2	10	3	4	6	3	3
Weight	170	790	650	710	855	650	660
Width	107	182	180	182	191	129	129
Length	82	152	119	139	178	145	145
Thikness	4	58	58	58	63	53	53
Water Resistance						✓	✓
UV cut	✓	✓	✓	✓	✓	✓	✓

Three simple steps to using your binoculars correctly

- 1** Adjust the width of the eyepiece lenses to approximate the distance between the pupils of your eyes.



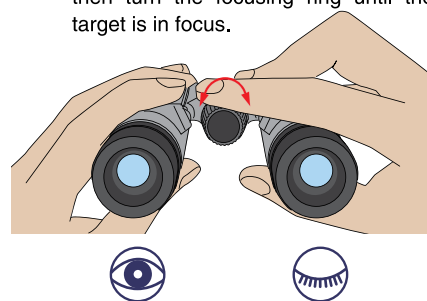
Look through the binoculars with both eyes, and adjust the width until the left and right fields of vision form a single circle.



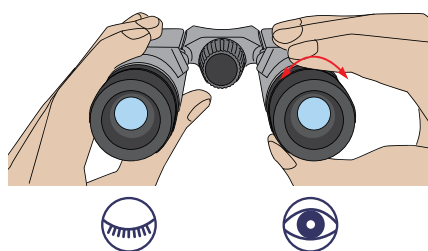
If width adjustment is not correct, the center of the image will be difficult to see and the periphery blurred.

If width adjustment is correct, the left and right fields of view will form a single circle.

- 2** **Left eye:** Determine the target, first look at it using the left eye only, and then turn the focusing ring until the target is in focus.

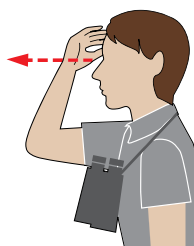


- 3** **Right eye:** Look at the same target using the right eye alone, and then turn the eyepiece lens ring to bring the target into focus.

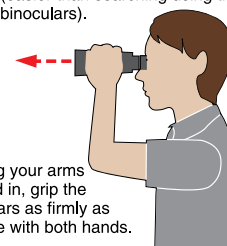


Tips on spotting your target

- 1** First identify your target using your naked eye.



- 2** Then, maintaining that stance, put the binoculars to your eyes (easier than searching using the binoculars).



Keeping your arms pressed in, grip the binoculars as firmly as possible with both hands.

More than just recording

Personal and professional audio recorders



Voice Recorders

VN-541PC

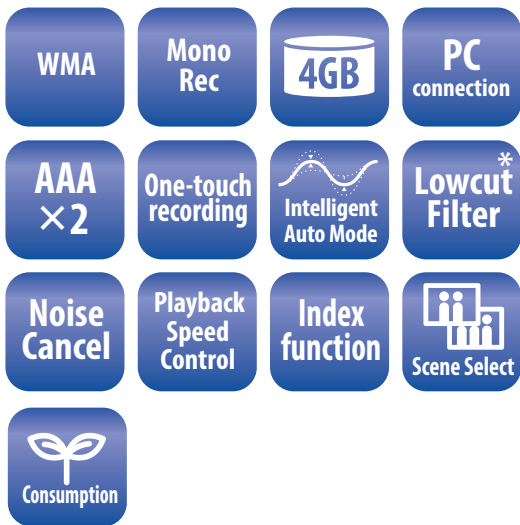
Entry class model for memo recording
designed to make setting and
recording easy



Black

Specifications

Built-in Memory	4GB (Max. recording time : approx. 1570 hours)
External memory	Not available
Number of folders	4 folders
Max. number of recordings	199 files per folder
Recording format	WMA
Highest audio quality mod	WMA 32kbps (When recording at [TALK] or [MUSIC])
Frequency response	40 - 13,000Hz (When recording at [MUSIC])
LCD size	1.39 inch
Battery life	Approx. 60 hours (When recording at [LP](WMA 5kbps))
Speaker	Ø20mm (Max. working output : 200mW)
Dimension	108 x 37.5 x 20mm
Weight	67g (including batteries)
Languages	EN



* Included in recording scene setting.



Features

Large LCD display

An easy-to-read, user-friendly display

micro USB connector

REC switch

One-touch direct recording available

Large control buttons

An easy-to-operate button layout

Front-mounting speaker

Large speaker in the front offers clear playback



Low-noise monaural omni-directional microphone

Clearly captures sound from all directions

Shaped to fit your index finger

Easy to hold and easy to operate

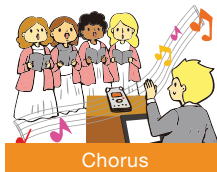
Battery cover that does not come off

For loss prevention, it is connected to the body with the joint part

Strap hole

Strap makes it easier to carry around

Typical Example



WS-852

- 4GB memory plus microSD card slot
- Built-in stereo microphones
- Simple Mode
- 5 folders for file storage, 200 messages per folder
- Retractable USB connector
- Intelligent AUTO Mode
- Low Cut-Filter
- Recording Scenes



Easy-to-handle dictation recorder

The WS-852 digital voice recorder is a true master at note-taking. Its stereo microphones feature a 90° layout to capture superb stereo sound with every recording – whether a school lecture or a business meeting. If the speaker is talking softly, this audio recorder’s Intelligent Auto mode increases the input level for easier listening with an even level of volume. The same goes if the speaker is talking loudly. Of course, full convenience also takes top priority. That’s why the OLYMPUS WS-852 voice recorder offers Simple Mode, which displays only essential information and frequently-used functions for faster operation.

Specifications

Storage Media

Internal / Removable Media	Internal + Removable
microSD / microSDHC card	Yes (up to 32GB)
Internal memory	4GB

USB functionality

Direct USB Connection	Yes
USB Speed	USB 2.0 High Speed
USB Classes	USB Storage class

Display

Display colour	White
Display Size	29 x 29mm / 1.61"
Display Type	Full Dot Matrix Display (108 x 84 dots)
Font size setting	Yes

Device operation

HOLD switch	Yes
Power switch	Yes

Recording Modes

Recording format	MP3
128 kbps	65h
64kbps	131h (mono)
8kbps	1040h (mono)
Maximum Recording Time	1040h (MP3, 8kbps)

Playback Modes

Playback format	MP3
-----------------	-----

Sampling frequency

MP3	44.1kHz 8 - 128kbps
-----	---------------------

Frequency response

MP3	128kbps / 40 - 17000Hz
	64kbps / 40 - 15000Hz
	8kbps / 40 - 3500Hz

Record function

Operation	
Index	Up to 99 per file
Auto recording	VCVA (Variable Control Voice Actuator) Voice Sync
Recording Scenes	Meeting Conference Dictation Speech-Recognition Telephone recording Duplicate
Advanced recording	Low Cut-Filter

Playback function

Playback speed	Adjustable (50 - 200%)
File operation	Forward / Reverse Skip Fast forward and rewind
File selection	File Playback Folder Playback
Repeat functions	Repeat playback A-B repeat playback
Sound enhancement	
Playback Scenes	

Data organisation

Erase	Erase single files Erase all files
No. of folders	5
Files per folder	200
File divide	Yes (Only MP3 files)

Other Features

Beep signal (system sound)	Yes
----------------------------	-----

Software

Corresponding Audio software	Olympus Sonority (optional)
------------------------------	-----------------------------

Interfaces Input

Microphone sensitivity / gain	High / Low / Intelligent Auto
PC interface	USB Storage class
Microphone jack	Yes
Microphones	Built-in stereo microphones (Directional)

Interfaces Output

Speaker Diameter	Built-in ø 20 mm round dynamic speaker
Max. working output	250mW
Earphone jack	Yes

Power Supply

Power Supply	Battery: 2 x AAA
Alkaline battery life	Recording: 110h (LP mode) Playback: 90h via earphones

Dimensions

HxWxD	111.5 x 39 x 18mm
Weight	77g

Exterior

Housing colour	Silver
Housing material	Plastic

Languages

Menu languages	EN, FR, DE, IT, ES, RU, PL, CS, SV, TR, NL, DA, CN
----------------	-------------------------------------------------------

Hardware Security

Lock single files	Yes
-------------------	-----

Operating Systems & Requirements

Windows	Microsoft Windows Vista /7/8/8.1
Macintosh	Mac OS X 10.5 - 10.9

OLYMPUS®

Your Vision, Our Future

Authorized Service Centre:

Bittech Services.
Unit No. 4th Floor, Plot No.137AB, Kandivali Co-op. Industrial Estate Ltd, Charkop, Kandivali (West), Mumbai-400067.
Tel:+ 91-22 50612700

Dealer details:



Creative Peripherals

Creative Peripherals & Distribution Ltd.

Unit No. 3rd & 4th Floor, Plot No.137AB, Kandivali Co-op. Industrial Estate Ltd, Charkop, Kandivali (West), Mumbai-400067.
Tel: +91-22 50612700 | Email: sales@ecreativeindia.com | www.ecreativeindia.com

For Any Queries, Please Contact:

Ahmedabad: 9879049707 Aurangabad: 9004600682 Bangalore: 9940559877 Chennai: 9884761106 Hyderabad: 9940559877
Cochin: 9995884550 Goa: 9004600682 Indore: 9993020688 Kolkata: 9830773969 Ludhiana: 9855667705 Lucknow: 9711770148
Mumbai: 9867211903 Nagpur: 9987560724 Nasik: 9004600682 Pune: 9004600682 Surat: 9909609545 Rajkot: 9714036139
Surat: 99096 09545



/ OlympusProIndia



/ olympuspro



/ olympusproindia